



INTERNATIONAL  
STUDENT  
INSURANCE

# A Crisis Toolkit:

## Collaboration in Navigating International Student Crises

# Agenda

**01**

**Exploring Crisis  
Management**

**02**

**Identify  
Collaborators  
through Case  
Studies**

**03**

**Conclusions and  
Resources**

**04**

**Q&A**



INTERNATIONAL  
STUDENT  
INSURANCE

# Presenters



**Laure  
Bordas-Isner**

International Student and  
Scholar Advisor

**University of Michigan**



**Jennifer  
Frankel**

Vice President, University  
Relations

**International Student  
Insurance (ISI)**



**Lauren Perry**

Associate Director of  
International Recruitment

**Albion College**

# Exploring Crisis “Management”





INTERNATIONAL  
STUDENT  
INSURANCE



**Actions needed vary dramatically based on circumstances**



**Best way to prepare is to think through scenarios in advance**



**Crisis scenarios help us identify the resources and collaborators we need**



**Goal is to return to your campus with an action plan to research and reach out to collaborators**

# **Actions Needed for Managing Crises**

# Using a Rubric to Create a Crisis Toolkit

**Consider the What? Where? When? How? Who? Of the crisis**

**Think about your role and responsibilities vs that of others**

**Who do you need to know:**

- on campus
- in the community
- in the government/legal realm

**What actions can you take now to:**

- Help prevent the crisis in the first place
- Reduce the damage during the crisis
- Prepare to clean up from each type of crisis when it happens?

# Crisis Rubric to Create your Toolkit

TOOLKIT	PRE-CRISIS/PREVENTION	DURING CRISIS	POST CRISIS
Campus			
Community			
Legal/Govt			
Others			



## CRISIS # 1: Hate/Discrimination Case

A Chinese student, new this semester, reports incidents of being asked by other students about stealing information to "take back to China" or being a spy. The student shares that they thought they were jokes at first, but the comments persist, causing the student to feel unwelcome or threatened at times. According to the student, their instructors appear to notice, but do not intervene.





# Crisis Rubric to Create your Toolkit

TOOLKIT	PRE-CRISIS/PREVENTION	DURING CRISIS	POST CRISIS
Campus			
Community			
Legal/Govt			
Others			

## CRISIS # 2:

# Domestic Violence Case

A student and his girlfriend (both international students) have a very tumultuous relationship. Campus police have been called multiple times to intervene when they were loud and physical on campus. Campus police have notified the international office about the situation and warns that next time there will be an arrest.



# Crisis Rubric to Create your Toolkit

TOOLKIT	PRE-CRISIS/PREVENTION	DURING CRISIS	POST CRISIS
Campus			
Community			
Legal/Govt			
Others			

## CRISIS # 3:

# Health/Medical Emergency

Four international students travel to Las Vegas over Thanksgiving Break. They are driving at night in a rented vehicle. The driver swerves off of the road to avoid a coyote. Two students are banged up but are generally okay. One student is not wearing their seatbelt and is thrown from the car and dies. The student in the passenger seat is severely hurt and is in the ICU. She is in a hospital outside of Las Vegas when one of the students calls and tells you what has happened.



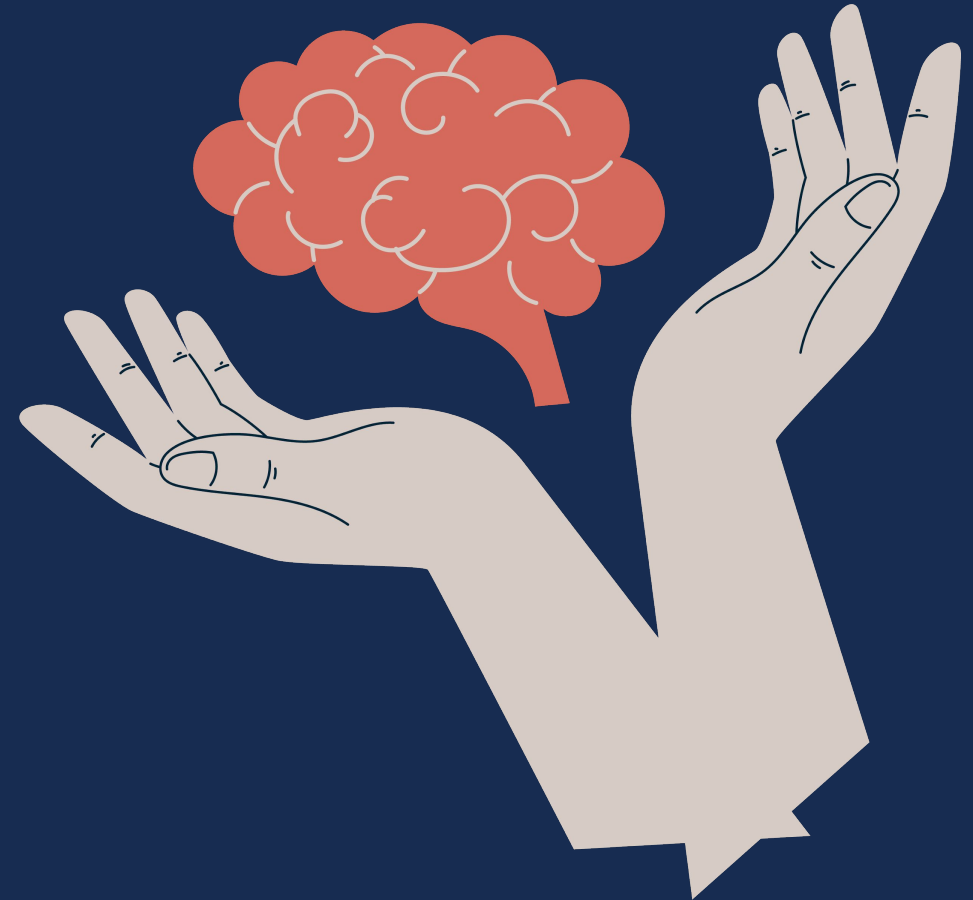
# Crisis Rubric to Create your Toolkit

TOOLKIT	PRE-CRISIS/PREVENTION	DURING CRISIS	POST CRISIS
Campus			
Community			
Legal/Govt			
Others			

## CRISIS # 4:

# Mental Health Case

A student becomes manic after discontinuing medication for Bipolar Disorder. She stops attending class. Residence Life is notified after several manic incidents in the dorm. A decision is made by several campus offices that the student needs to return home to continue treatment and take a leave of absence from school. The student has an episode at the airport, refuses to board the plane and is put on a 72-hour psych hold at a facility



# Crisis Rubric to Create your Toolkit

TOOLKIT	PRE-CRISIS/PREVENTION	DURING CRISIS	POST CRISIS
Campus			
Community			
Legal/Govt			
Others			



## CRISIS # 5: Immigration Case

One of your Egyptian PhD students has been taken into ICE custody and is in a detention facility. He is in legal J-1 status on your DS-2019, but is being told by ICE that his visa has been “revoked.” His current visa, DS-2019, and I-94 are all valid (although he had previously been on a Fulbright DS-2019 for his Master’s program). You attempt to contact ICE, but no one will give you any information. The student has no money to hire an attorney. The student has committed no crime or immigration violation. The entire Muslim community both on and off campus is calling regarding his situation.





# Crisis Rubric to Create your Toolkit

TOOLKIT	PRE-CRISIS/PREVENTION	DURING CRISIS	POST CRISIS
Campus			
Community			
Legal/Govt			
Others			

# Resources





# References

**FEMA.gov**

**Study in the States**  
<https://studyinthestates.dhs.gov>

**Department of State**  
<https://j1visa.state.gov>

**Find an immigration attorney**  
<https://studyinthestates.dhs.gov>

**Links to your school's website**

**Community resources**

**Telecounseling resources**

# Helpful Tools



## Emergency Alert System

[TITLE IV Support](#)



[Crisis Management Team](#)

# Self-Assessment /Self-Help Tools

1. [Counseling and Psychological Services](#)
  - a. [CAPS Crisis Response Team](#)
  - b. [Self-Help Resources](#)
2. [University of Michigan Online Screening Tool](#)



INTERNATIONAL  
STUDENT  
INSURANCE

# Hotline & Services

**Emergency Line**

**911**

**Suicide & Crisis Lifeline**

<https://988lifeline.org>

**988**

**National Domestic Violence Hotline**

<http://www.thehotline.org>

**1-800-799-SAFE**

**It Gets Better Project (LGBTQ)**

[www.itgetsbetter.org/pages/get-help](http://www.itgetsbetter.org/pages/get-help)

**1-866-4-U-TREVOR**

**Crisis Text Line**

<http://www.crisistextline.org>

**Text 741-741**



INTERNATIONAL  
STUDENT  
INSURANCE

# NAFSA: Services

NAFSA has an excellent International Student and Scholar Services Checklist for each of the categories we have gone over today.

SCAN ME





INTERNATIONAL  
STUDENT  
INSURANCE

**THANK YOU!**